
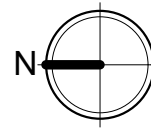
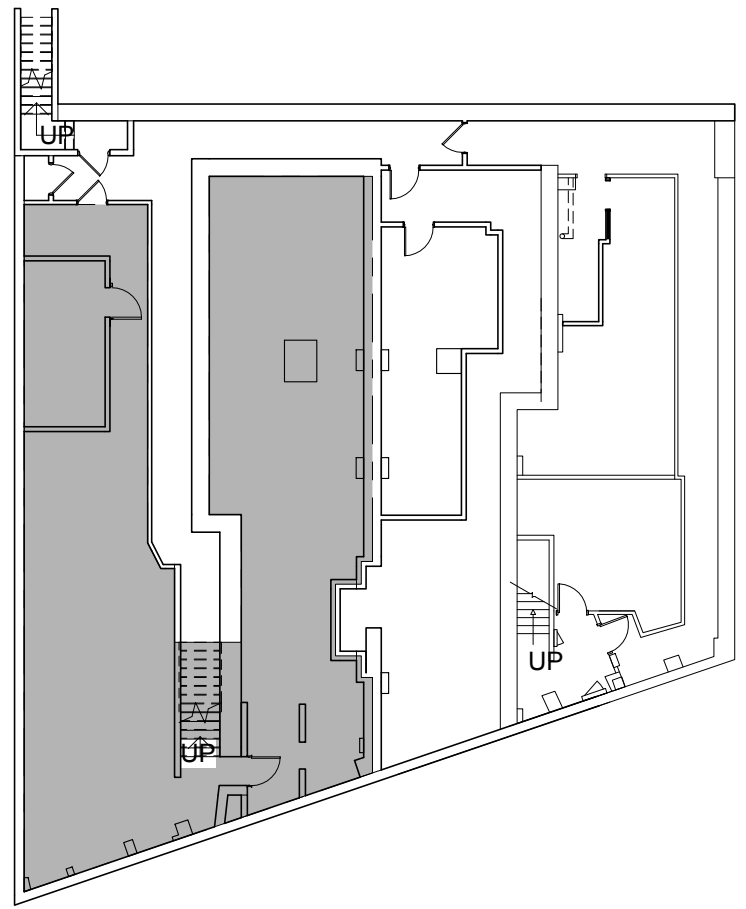
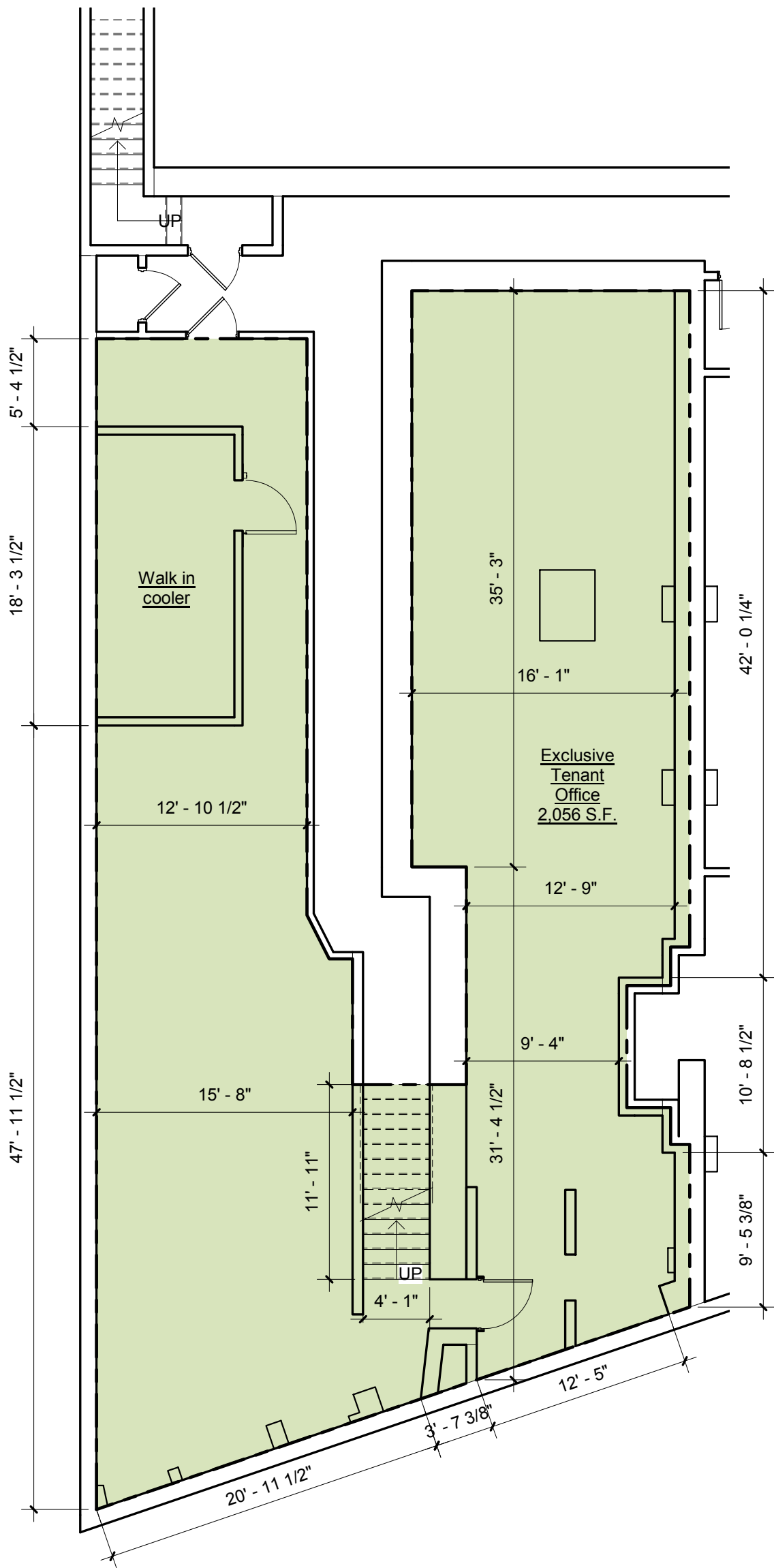
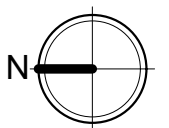


1 First Floor Existing Conditions Plan  
1/8" = 1'-0"


 First Floor Rentable Area : 3,915 S.F.	<b>CHICAGO</b> — <b>DESIGN</b> — <b>NETWORK</b> —	Existing Basement Floor Plan	
		850 West Jackson Blvd. Suite 850 Chicago, Illinois 60607	1131 N. State Street Chicago, IL



Basement Key Plan



1 Basement Existing Conditions Plan  
1/8" = 1'-0"

 Basement Rentable Area : 2,056 S.F.	<b>CHICAGO</b> — <b>DESIGN</b> — <b>NETWORK</b> —	Existing Basement Floor Plan	
		1131 N. State Street Chicago, IL	Basement Floor Plan 18 2500.02 SCALE: AS NOTED 04/23/18
<small>850 West Jackson Blvd.          Suite 850          Chicago, Illinois 60607</small>		<b>EC-00</b>	