

Lincolnshire - Chicago North Suburbs Vacant Land for Sale

21661 N. Milwaukee Ave.



156 North Jefferson St.
Chicago, Illinois 60661-1411
kudangroup.com

Demographics

	1-mi.	3-mi.	5-mi.
Population			
2012 Male Population	1,271	20,322	75,527
2012 Female Population	1,360	21,379	79,669
2012 Total Population	2,631	41,701	155,196
2012 Total Households	935	15,120	56,713
Housing			
2000 Total Housing Units	631	13,644	53,577
Income			
2012 Median Household Income	\$144,466	\$117,384	\$93,524
2012 Per Capita Income	\$59,682	\$56,982	\$47,256
2012 Average Household Income	\$167,939	\$155,303	\$127,599

Nearby Businesses

Regal Cinemas & IMAX	Viper Alley
Big Bowl Chinese & Thai	Fleming's Prime
Fleming's Prime Steakhouse	Par-King Skill Golf
Cheesecake Factory	Wildfire

Highlights

Land adjacent to the former Cubby Bear North, located in the north suburbs of Chicago. Near corporate campuses of Acco Brands and CDW Corp., as well as Par-King miniature golf course. A number of upscale shopping centers, hotels and a retirement community are also adraw.

Lincolnshire

Lincolnshire is a northern suburb of Chicago, located in Vernon Township of Lake County. The Des Plaines River bisects the village from north to south, while Illinois Route 22 divides the village from east to west. Lincolnshire is home to several headquarters of large corporations, including the global outsourcing company Aon Hewitt and stationery products manufacturers Quill and ACCO Brands. Every year the village hosts several festivals in either one of nine public parks or in commercial establishments such as the Village Green or City Park.

21661 N Milwaukee Ave - Cubby Bear North

Size	4.1086 Acres
Price	\$1,232,580 Vacant Land



For additional information or to schedule a showing contact:

Smart Phone (QR Code)

Jerrod Rosen

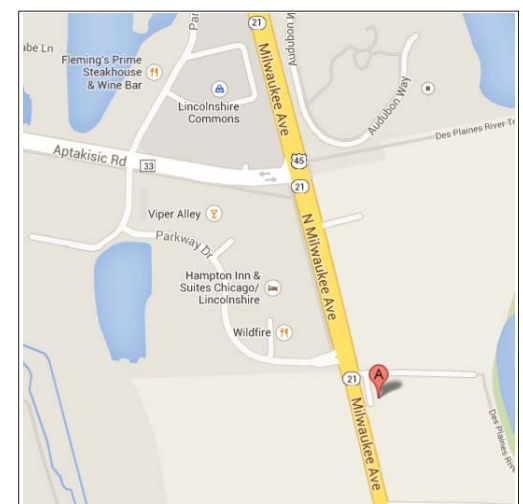
312.575.0480 Ext. 21

Jerrod@kudangroup.com

No representation is made as to the accuracy of this information and it is submitted subject to errors, omissions, prior sale or withdrawal without notice. 653 04-18-14

Map

Milwaukee Ave and Parkway Drive

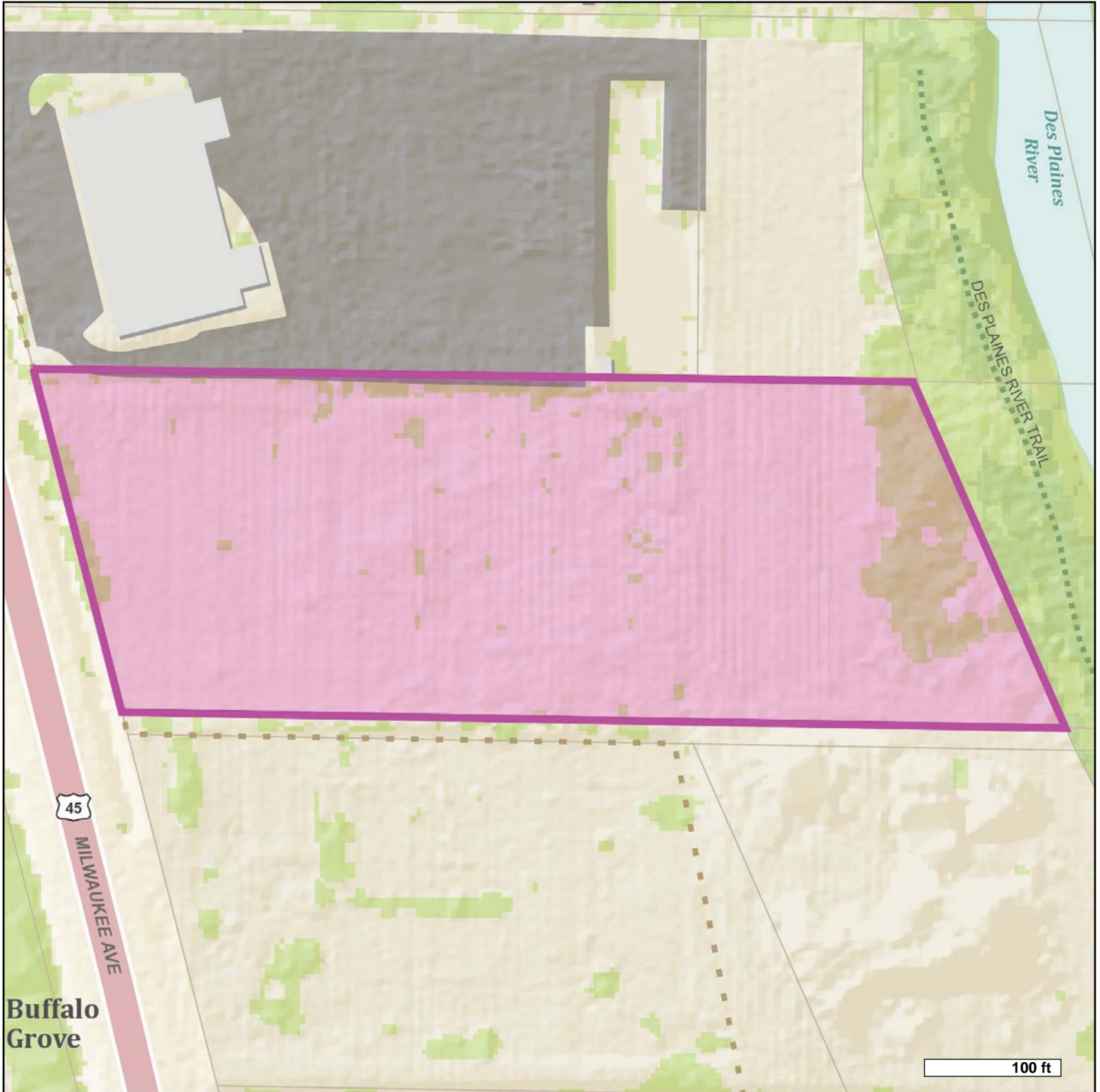


Information Sheet – Vacant Land

Transaction Type	Real Estate Sale
Property Type	Vacant Land
Address	21661 N. Milwaukee Ave.
City, Zip	Lincolnshire, IL 60069 (Unincorporated Lake County)
Area	Northern Suburbs
County	Lake County
Real Estate	
Asking Price	\$1,232,580.00
Lot Size	4.1086 Acres
Property Taxes	\$17,601 (2012)
Property Index Number	15-26-100- 044
Property Data	
Zoning	General Commercial
Mayor	Brett Bloomberg
Nearby Business	Viper Alley, Big Bowl Chinese & Thai, Wildfire, Potbelly, Red Robin, Par-King Skill Golf, Hampton Inn & Suites, Fleming's Prime Steakhouse, Regal Cinemas & IMAX, Cheesecake Factory
Property Description	Vacant land next to substantial free standing, two-story building, located in unincorporated Lake County. Building was a former 30,000 SF sports-themed entertainment complex, restaurant and bar called the <i>Cubby Bear North</i> in operation for over 15 years. Location is near the corporate campuses of Acco Brands and CDW Corp., as well as the visitors of Par-King miniature golf course. A number of upscale shopping centers, hotels and a retirement community are also adraw.
Location Description	Lincolnshire Picturesque Lincolnshire boasts tree-lined winding roads, luxurious homes and a variety of fine dining choices along Restaurant Row. The village

	<p>hosts many family events throughout the year. Lincolnshire is a village in Vernon Township, Lake County, in the U.S. state of Illinois. The village is a northern suburb of Chicago. The population of Lincolnshire was 7,275 at the 2010 census.http://en.wikipedia.org/wiki/Lincolnshire, Illinois - cite note-Census 2010-2 Lincolnshire was incorporated on August 5, 1957, from the unincorporated Half Day area when land was purchased to build a residential subdivision. The community underwent an aggressive era of expansion from 1983 to the 1990s. The Des Plaines River bisects the village, passing from north to south; Illinois Route 22 also divides the village into two parts, crossing the village from east to west.</p>
<p>Cross Streets</p>	<p>Milwaukee Avenue and Parkway Drive</p>
<p>Reasons for Selling</p>	<p>Other Interests</p>

Lake County, Illinois







LakeCounty
Geographic Information System

Lake County Department
of Information Technology
18 N County St
Waukegan IL 60085
(847) 377-2373

Map Printed on 05/22/2014
Parcel 15-26-100-044 is outlined.



-  Tax Parcels: (various)
-  Lake County Border
-  Water
-  Municipalities
-  Tax Parcels
-  Parks
-  Railroads
-  Trails
-  2011 Buildings

Disclaimer

The selected soil feature layer may not occur anywhere in the current map extent. A Registered Land Surveyor should be consulted to determine the precise location of property boundaries on the ground. This map does not constitute a regulatory determination and is not a base for engineering design. This map is intended to be viewed and printed in color.